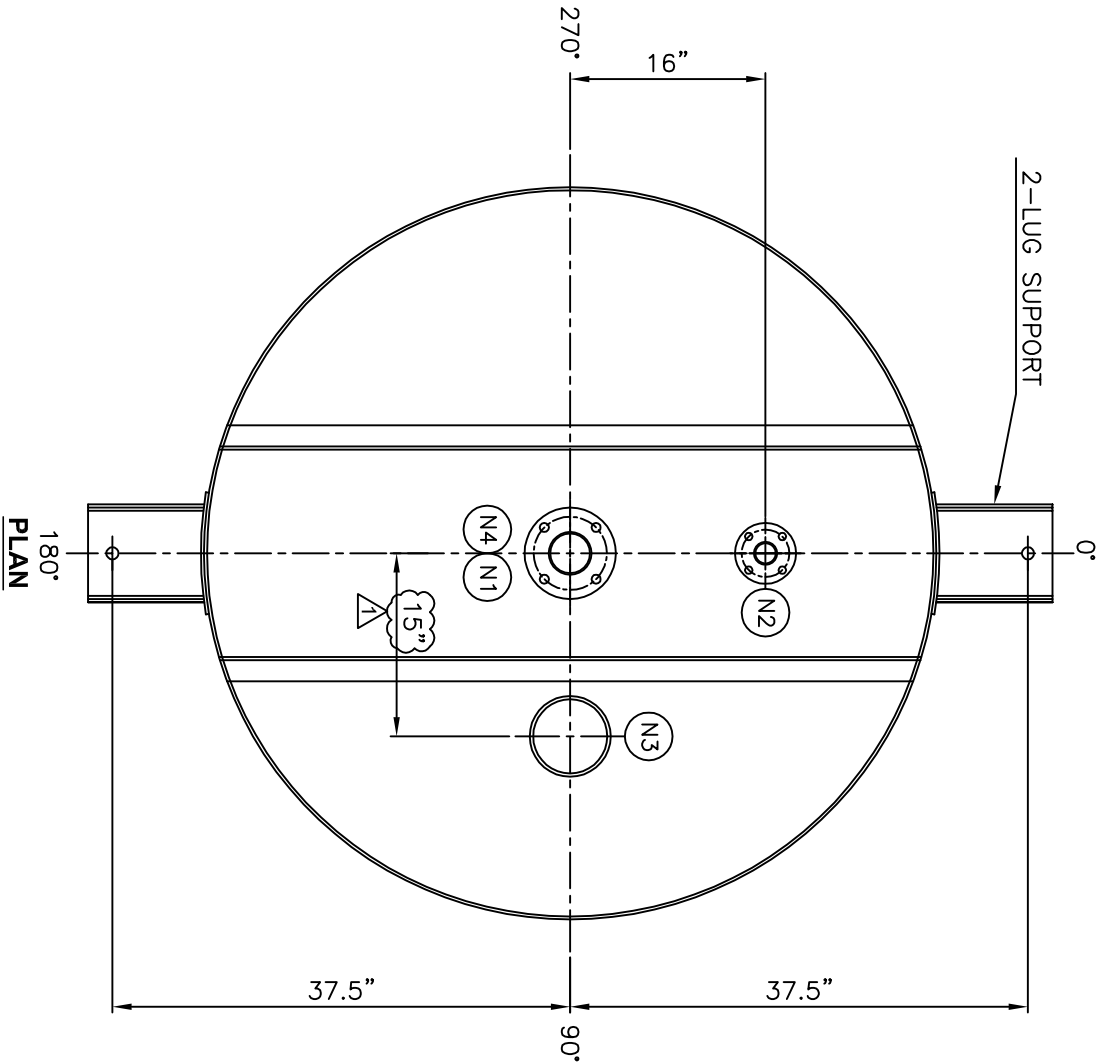
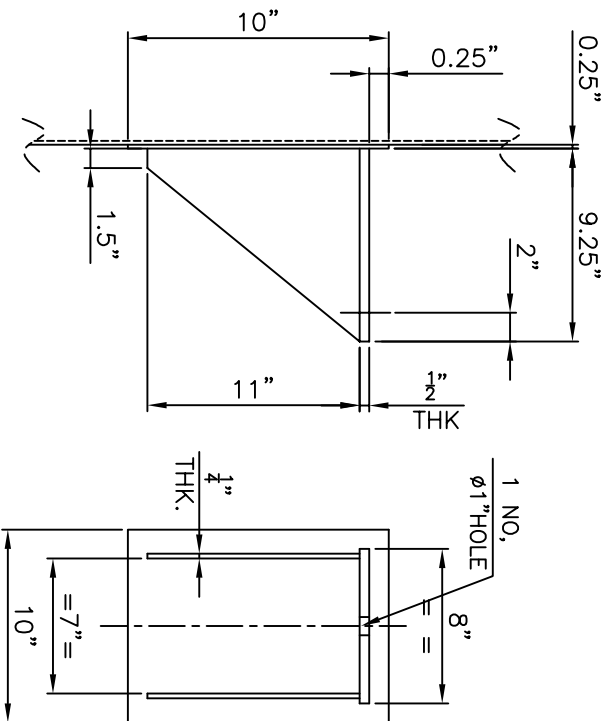


ELEVATION



PLAN



DETAILS OF LUG SUPPORT

NOZZLE CONNECTIONS:-						
NOZZLE MARK	SERVICE	QTY.	SIZE NB.	NOZ. SCH./THK	FLANGE	RATING
N1	INLET	1	3"	SCH 40	SORF	#150
N2	INLET	1	1.5"	SCH 40	SORF	#150
N3	VENT	1	6"	SCH 40	--	--
N4	OUTLET	1	3"	SCH 40	SORF	#150

MATERIAL SPECIFICATION:-

SHELL		IS 2062
DISHD ENDS		IS 2062
NOZZLE FLANGES	NOZZLE NECK	IS 1239 / IS 3589
	FLANGE < 100 NB	C.S.
	FLANGE > 100 NB	IS 2062
	PAD PLATE	IS 2062
	BOLT WITH NUT	SA 193 B7 / SA 194 2H
	GASKET	GARLOCK 3000 OR EQUIVALENT

DESIGN DATA :-

DESIGN CODE - GEP / ASME SECTION VIII DIV.1

DESIGN PRESSURE (psig)	ATM
OPERATING PRESSURE (psig)	ATM
DESIGN TEMPERATURE °F	300
OPERATING TEMPERATURE °F	250
TEST PRESSURE (psig)	19.37
CORROSION ALLOWANCE.MM	1/2" mm FOR C.S. PARTS
JOINT EFFICIENCY SHELL/END	0.85 / 0.85
RADIOGRAPHY	SHELL-SPOT+I, HEAD-SPOT+T

GENERAL NOTES:-

- ALL DIMENSIONS ARE IN INCHES, UNLESS OTHERWISE SPECIFIED.
- ALL DISTANCE TO BE MAINTAINED W.R.T. CENTER LINE/BASE LINE/T.L. OF EQUIPMENT.
- ALL BOLT HOLES TO STRADDLE THE PRINCIPAL AXIS OF EQUIPMENT.
- 1/8" TELE-TALE HOLES TO BE PROVIDED FOR ALL LINER & REINFORCEMENT PADS. THESE HOLES SHALL BE TESTED PNEUMATICALLY.
- AT 1.5 KG/CM² (9) PRESSURE USING SOAP SOLUTION.
- NOZZLES WITHOUT BLIND FLANGES SHALL BE SUITABLY COVERED WITH WOOD/METAL COVER BEFORE DISPATCH.
- ALL VERTICAL NOZZLE FLANGE FACES TO BE PARALLEL TO GROUND LEVEL & HORIZONTAL NOZZLE FLANGE FACES 90° TO GROUND LEVEL, UNLESS OTHERWISE SPECIFIED.
- ALL FLANGES DIM. TO ANSI B16.5 #150, WITHOUT HUB, UNLESS OTHERWISE SPECIFIED.
- ALL GASKETING SURFACE TO BE SERRATED FINISHED.
- ALL TUBE HOLES SHALL BE REAMED
- NOZZLE STANDOUT ON SHELL IS REFERRED FROM THE CENTER LINE TO FLANGE FACE AND ON DISHD END IT IS REFERRED FROM WELD LINE.
- ALL NOZZLE ABOVE 80NB TO BE REINFORCED WITH PAD.
- ALL NOZZLE BELOW 40NB TO BE STIFFENED WITH TWO CLEATS.

TITLE :		DRAWING NO.	REV	SCALE
GENERAL ARRANGEMENT OF		390295.02.11C	01	NTS
DE FEEDER		SHEET NO.		SIZE
		1 OF 1		A3

FENIX PROCESS TECHNOLOGIES, PUNE - 411 004